

**RRH Antibody (C-term)**  
**Affinity Purified Rabbit Polyclonal Antibody (Pab)**  
**Catalog # AP16644b****Specification**

---

**RRH Antibody (C-term) - Product Information**

Application	WB,E
Primary Accession	<a href="#">O14718</a>
Other Accession	<a href="#">NP_006574.1</a>
Reactivity	Human
Host	Rabbit
Clonality	Polyclonal
Isotype	Rabbit IgG
Calculated MW	37423
Antigen Region	213-240

**RRH Antibody (C-term) - Additional Information****Gene ID** 10692**Other Names**

Visual pigment-like receptor peropsin, RRH

**Target/Specificity**

This RRH antibody is generated from rabbits immunized with a KLH conjugated synthetic peptide between 213-240 amino acids from the C-terminal region of human RRH.

**Dilution**

WB~~1:1000

E~~Use at an assay dependent concentration.

**Format**

Purified polyclonal antibody supplied in PBS with 0.09% (W/V) sodium azide. This antibody is purified through a protein A column, followed by peptide affinity purification.

**Storage**

Maintain refrigerated at 2-8°C for up to 2 weeks. For long term storage store at -20°C in small aliquots to prevent freeze-thaw cycles.

**Precautions**

RRH Antibody (C-term) is for research use only and not for use in diagnostic or therapeutic procedures.

**RRH Antibody (C-term) - Protein Information****Name** RRH**Function** May play a role in rpe physiology either by detecting light directly or by monitoring the

concentration of retinoids or other photoreceptor-derived compounds.

#### **Cellular Location**

Membrane; Multi-pass membrane protein

#### **Tissue Location**

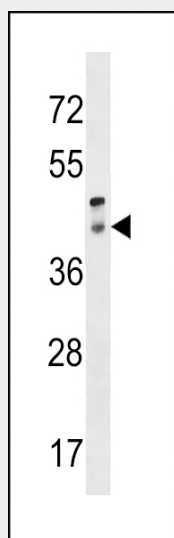
Found only in the eye, where it is localized to the retinal pigment epithelium (RPE). In the RPE, it is localized to the microvilli that surround the photoreceptor outer segments

#### **RRH Antibody (C-term) - Protocols**

Provided below are standard protocols that you may find useful for product applications.

- [Western Blot](#)
- [Blocking Peptides](#)
- [Dot Blot](#)
- [Immunohistochemistry](#)
- [Immunofluorescence](#)
- [Immunoprecipitation](#)
- [Flow Cytometry](#)
- [Cell Culture](#)

#### **RRH Antibody (C-term) - Images**



RRH Antibody (C-term) (Cat. #AP16644b) western blot analysis in human placenta tissue lysates (35ug/lane). This demonstrates the RRH antibody detected the RRH protein (arrow).

#### **RRH Antibody (C-term) - Background**

Opsins are members of the guanine nucleotide-binding protein (G protein)-coupled receptor superfamily. This gene belongs to the seven-exon subfamily of mammalian opsin genes that includes opsin 5 and retinal G protein coupled receptor. [provided by RefSeq].

#### **RRH Antibody (C-term) - References**

Kalsi, G., et al. Hum. Mol. Genet. 19(12):2497-2506(2010)  
Luttrell, L.M. Mol. Biotechnol. 39(3):239-264(2008)  
Rivolta, C., et al. Mol. Vis. 12, 1511-1515 (2006) :  
Barrios-Rodiles, M., et al. Science 307(5715):1621-1625(2005)  
Bellingham, J., et al. BMC Genomics 4 (1), 3 (2003) :